



COMPANY PROFILE

شركة تحالف الموارد للمقاولات العامة

RESOURCES ALLIANCE GENERAL CONTRACTING COMPANY

ELEVATING  
INDUSTRIAL  
STANDARDS  
WITH  
INNOVATION

[www.reallco.com](http://www.reallco.com)



# ABOUT US

Realco is a dynamic and trusted service provider based in Saudi Arabia, specializing in industrial equipment solutions—ranging from heavy and light machinery to lifting equipment and transportation services. We deliver reliable, professional, and cost-effective support to the Oil & Gas, Construction, and broader industrial sectors.

Alongside our equipment solutions, Realco supplies a wide range of industrial materials, including building materials, safety products, consumables, and tools essential for day-to-day operations and maintenance activities. We also provide qualified manpower, covering project managers, operations managers, planners, HSE officers, foremen, site supervisors, administrators, equipment operators, riggers, electricians, technicians, and various skilled and general laborers. Each individual is carefully selected to ensure quality workmanship, safety compliance, and productivity on every project.

Our integrated approach—combining equipment, materials, and manpower—ensures that clients receive the right resources at the right time, enhancing overall project efficiency. At Realco, we are committed to excellence, integrity, and client satisfaction, consistently delivering solutions that meet the highest standards of safety, performance, and reliability. Our goal is to be a dependable partner, contributing to the success of every project we support.

## VISION

To be a leading and trusted partner in Saudi Arabia's Oil & Gas and Construction sectors, recognized for delivering exceptional manpower, material, and equipment solutions that drive efficiency, safety, and sustainable growth across every project we serve.

## MISSION

Our mission is to deliver reliable, high-quality services that help clients achieve operational excellence. We build lasting partnerships by providing skilled manpower, quality materials, and dependable equipment. Through innovation, safety, and integrity, Realco supports client success and the Kingdom's industrial growth.



# QUALITY, HEALTH & SAFETY POLICY

At Realco, we are dedicated to delivering projects with the highest standards of quality while ensuring a safe and secure working environment for our employees, clients, and partners. Safety and quality are at the heart of every stage of our operations—from planning and mobilization to project execution and completion.

We strictly adhere to local regulations, international standards, and industry best practices. Our workforce is regularly trained to identify hazards, assess risks, and implement preventive measures, fostering a proactive safety culture across all job sites. Simultaneously, we emphasize quality assurance through rigorous processes, continuous monitoring, and adherence to project specifications, ensuring that every deliverable meets or exceeds client expectations.

Through continuous improvement, accountability, and teamwork, Realco strives to achieve zero incidents, protect the wellbeing of our people, and deliver projects with excellence—upholding the highest standards of both safety and quality in every project we undertake.

## COMPANY'S RESPONSIBILITY

Realco shall strive to provide and maintain a working environment that is safe, free from risks, and aligned with the highest standards of quality for its employees, contractors, and assets. Realco is fully committed to upholding its integrated Quality and HSE Policy, pledging complete cooperation in ensuring that all operations are conducted safely, responsibly, and in full compliance with industry-leading quality requirements.

## EMPLOYEE'S RESPONSIBILITY

Every employee shall endeavor to comply with all relevant legislation, instructions, rules, and procedures in the interest of Quality, Health, and Safety. Employees will be mutually responsible for the wellbeing of everyone, while ensuring proper use of equipment and machinery to maintain safe operations and minimize risk.

We are committed to:

- Reporting quality concerns promptly and contributing to solutions that enhance overall performance and customer satisfaction.
- Take reasonable care to protect own Health and Safety.
- Take reasonable care to protect the Health & Safety of others.
- Take proper care of personal protective equipment and the correct use thereof.
- Report a situation or act promptly that is a risk to any person.
- Co-operate with any person to ensure compliance with the duties and responsibilities placed on the person in terms of the Health & Safety act.
- Comply with prescribed Health & Safety measures.
- Taking responsibility for preventing defects, reducing errors, and ensuring continuous improvement in all tasks performed.



**ISO 9001:2015**  
Quality Management  
System



**45001:2018**  
Occupational Health Safety  
Management System



**14001:2015**  
Environment Management  
System



# EQUIPMENT RENTAL

Our mission is to deliver reliable, high-quality services that help clients achieve operational excellence. We build lasting partnerships by providing skilled manpower, quality materials, and dependable equipment. Through innovation, safety, and integrity, Realco supports client success and the Kingdom's industrial growth.

## Lifting Equipment

- Hydraulic Crane
- Crawler Crane
- Boom Truck
- Forklift
- Articulated Manlift
- Telescopic Manlift
- Mobile Crane
- Tower Crane



## Earth Moving Equipment

- Grader
- Bulldozer
- Wheel Loaders
- Excavator
- Rock Breaker
- Dump Truck
- Back Hoe
- Roller Compactor

## Transportation

- Hydraulic Low Bed Trailer
- 55 Seated Bus
- 33 Seated Coaster
- 15 Seated Hi Ace
- Pick Up, SUV's & Sedan

## Power Machinery

- Air Compressor
- Tower Lights
- Welding Machine
- Power Generator





## PORTABLE POWER MACHINERY

### Welding Equipments



### Air Compressors



### Generators



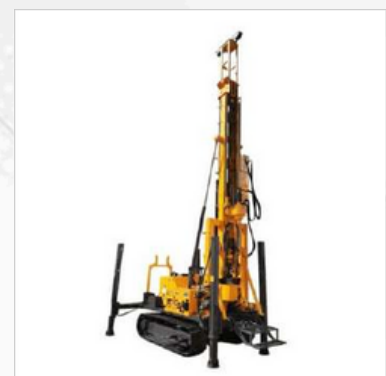
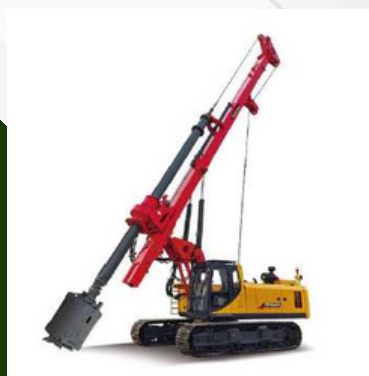
## HEAVY LIFTING EQUIPMENT



## BACKFILLING AND EXCAVATION



## DRILLING EQUIPMENT



# INDUSTRIAL MATERIALS

Reallco is a reliable supplier of high-quality industrial materials, catering to the diverse needs of Oil & Gas, Construction, and Industrial projects across Saudi Arabia. We provide a comprehensive range of materials and supplies essential for smooth project execution and maintenance.

Our product range includes building materials, steel and iron supports, structural steels, electrical and plumbing materials, safety equipment, consumables, industrial tools, utilities, and office accessories. Each item is sourced from trusted manufacturers and suppliers to ensure durability, safety, and compliance with industry standards.

With a strong supply network and efficient logistics, Reallco ensures timely delivery of materials to project sites, minimizing downtime and ensuring uninterrupted operations. Our commitment to quality, reliability, and customer satisfaction makes us a dependable partner for all your industrial supply requirements.



## **BUILDING MATERIALS**

STEEL/IRON SUPPORTS  
FOAM WORK ACCESSORIES  
WATERPROOFING  
THERMAL INSULATION  
ADHESIVE & SEALANT  
SURFACE FINISHERS  
CEMENT & READY MIX

## **TOOLS & UTILITIES**

POWER TOOLS  
HAND TOOLS  
MEASURING INSTRUMENTS

## **PLUMBING ACCESSORIES**

PIPES & FITTINGS

## **ELECTRICAL**

CABLES & WIRES  
SWITCHES  
TRANSFORMERS

## **SAFETY MATERIALS**

PPE  
FIRE PROTECTION  
FALL PROTECTION  
GAS DETECTION

## **METALS FITTINGS**

FLANGES  
VALVES  
SHEETS  
BEAMS  
DOWEL BARS  
GAUGES  
FASTENERS  
DUPLEX  
ALLOY

## **OFFICE ACCESSORIES**

STATIONARIES  
INK & PRINTING ACC.





## BUILDING MATERIALS



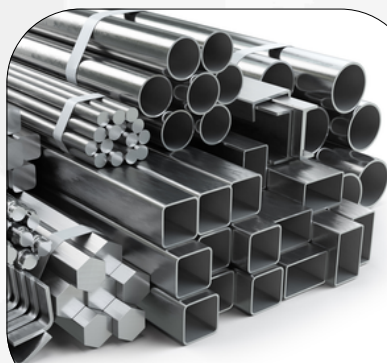
## PLUMBING



## ELECTRICAL



## STRUCTURAL STEEL



## SCAFFOLDING



## FITTINGS



## POWER TOOLS



## HAND TOOLS



## UTILITIES



## SAFETY



## INSTRUMENTATION



## OFFICE SUPPLIES



# HUMAN RESOURCE

Manpower is the foundation of every successful industry. In today's fast-paced era of industrial growth, maintaining an efficient and skilled workforce is essential to keeping up with global standards. At Realco, we specialize in providing reliable and professional manpower supply services on a rental basis, ensuring that our clients receive the right personnel exactly when and where they are needed.

We are committed to delivering exceptional manpower solutions within the agreed time frame, helping our clients achieve seamless project execution. Backed by a well-organized database of qualified candidates and a team of dedicated HR professionals, Realco has established a strong reputation for excellence in workforce supply across the Kingdom of Saudi Arabia.

- Project Manager
- Operations Manager
- Construction/Project Planner
- Lead Engineer
- Project Engineers
- HSE Officer
- Foreman
- Site Supervisor
- Site Administrator
- Equipment Operators
- Rigger
- Scaffolder
- Insulator
- Electrician
- Plumber
- Mason
- Carpenter
- Technicians
- Skilled Laborers
- General Laborer



## Empowering your Projects with the Right Workforce.





Our team thoroughly understands each client's requirements and provides manpower on temporary, contractual, or project-based terms, ensuring flexibility and efficiency in every engagement. With deep insight into evolving industry trends and access to a wide pool of skilled, trained, and certified workers, we guarantee the perfect alignment between job roles and talent. Through our professionalism, reliability, and unwavering commitment to quality and safety, Reallico continues to be a trusted partner in fulfilling workforce needs across Oil & Gas, Construction, and Industrial projects throughout the Kingdom.

At Reallico, we believe that providing the right people for the right job begins with a thorough and systematic selection process. Before deploying any skilled or unskilled manpower to our clients, we ensure that each candidate is carefully screened and evaluated according to the specific project requirements though:

**Interviews • Proper Documentation • Necessity Trainings • Medical certificates**

#### **ENGINEERS & INSPECTORS**

Civil Engineer  
Electrical Engineer  
Mechanical Engineer  
Piping/Welding Engineer  
Safety Engineer  
Instrument Engineer  
QA/QC Civil Inspector  
QA/QC Mechanical Inspector  
QA/QC Electrical Inspector  
QA/QC Piping Inspector  
QA/QC Instrumentation Inspector  
QA/QC Welding Inspector

#### **MECHANICAL & ELECTRICAL TRADE**

Tig Welder	Pipe fitter
Instrument Fitter	Instrumentation Supervisor
Rigger	Pipe Fabricator
Instrument Technician	Instrumentation Foreman
Welder (6G)	Steel Erector
Equipment Operator	Welding Supervisor
Welder (3G)	Mechanic
Side Boom Operator	Piping Foreman
Structural Erector	Mechanical Technician
Millwright Fitter	Mechanical Foreman
Electrical Foreman	Mechanic Diesel

#### **SUPERVISORS & GENERAL TRADE**

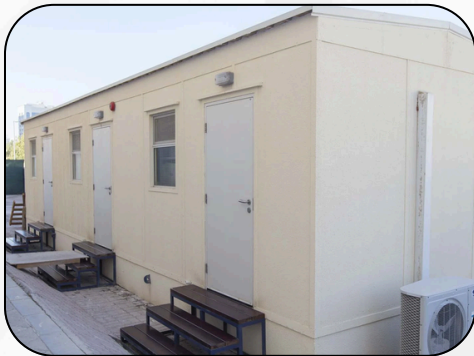
Civil Engineer	Safety Officer	Document Controller
Civil Supervisor	Heavy/Light Duty Driver	Scaffolder
Civil Foreman	Insulator	Secretary
Land Surveyor	AutoCAD Operator	Duct Worker
Electrician	Cladding Worker	Safety Supervisor
Mason	Computer Operator	Drafts man (Civil & Mechanic)
Steel Fixer	Painter/Spray	Dozer Operator
Carpenter	Material Controller	Crane Operator
Plumber	Sand Blaster	Labours

# PORTACABIN SUPPLIES



Reallico's Portacabins category offers a versatile range of modular structures designed to provide efficient, durable, and comfortable space solutions across a variety of applications. Our offerings include high-quality portable cabins for use as **site offices, accommodation units, security rooms, and storage facilities, as well as other temporary or semi-permanent spaces.** These cabins are engineered for easy deployment and relocation, making them ideal for dynamic project sites and evolving workspace requirements.

Built with robust materials, these units feature insulation, ventilation, and customizable layouts to meet specific operational needs and environmental conditions. We also supply a comprehensive range of accessories such as **steps, skids, windows, doors, lighting, and electrical fittings** to enhance functionality, safety, and convenience on construction sites, remote locations, and temporary setups.



ACCOMODATION UNITS



OFFICE / WORK STATIONS



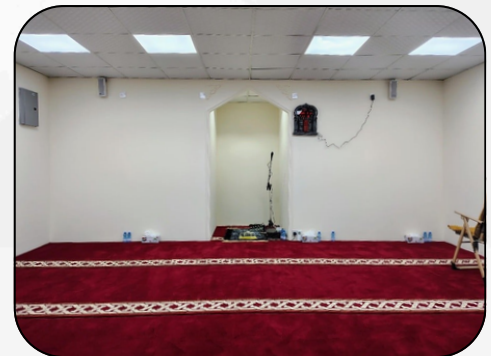
MESS HALLS & KITCHENS



TOILETS & SHOWERS



STORAGE FACILITIES



PRAYER ROOMS

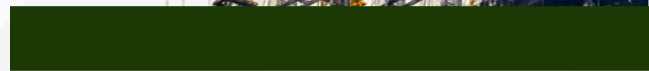
In addition to new units, Reallico offers **refurbishment, repair, and replacement of Portacabin parts** to help extend the life of your existing structures. Our skilled team restores worn or damaged components to optimal condition, enhancing both safety and functionality. We also provide used Portacabins, subject to availability, offering a cost-effective and dependable solution for temporary space needs across various projects.



# PROJECT MANAGEMENT

## CIVIL & STRUCTURAL

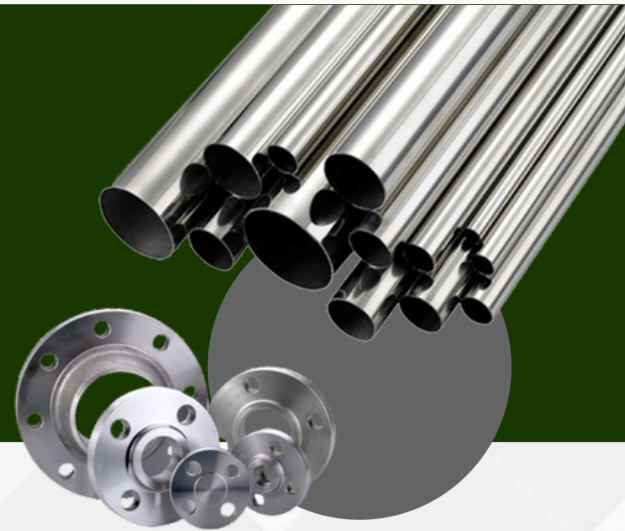
Our civil and structural services cover the complete scope of design, construction, and maintenance for industrial facilities, offshore platforms, and infrastructure projects. We specialize in reinforced concrete structures, steel fabrication, foundation works, and heavy civil construction, ensuring strict compliance with international safety, quality, and environmental standards. With experienced teams and advanced project management practices, we deliver robust, reliable, and long-lasting structural solutions for complex industrial environments.



- Surveying
- Earthwork
- Foundation
- Super Structure
- Industrial Building
- Architectural Finish
- Pipe Rack
- Warehouse
- Plant Road
- Pavement
- Landscaping
- Work Asphalt

## MECHANICAL & PIPING

We provide precision-engineered mechanical and piping solutions for industrial plants, refineries, and offshore platforms. Our services include fabrication, installation, and maintenance of process piping, structural steelworks, and pressure vessels, ensuring seamless operations and minimal downtime.



### MECHANICAL

- Stainless Steel & Duplex Steel
- Alloy Steel, Carbon Steel & LTCS Fittings
- Copper & Nickel Alloys Fittings
- Stainless Steel & Duplex Steel Forged Fittings
- Alloy Steel, Carbon Steel & LTCS Forged Fittings
- Copper & Nickel Alloys, Forged Fittings
- Steel Pipes & Fittings
- Grooved Fittings & Valves
- Soldering & Welding Products
- Pipes & Fittings
- Flanges
- Sheets & Plates

### PIPING

- Carbon Steel
- Stainless Steel
- Galvanized Steel
- PVC (Polyvinyl Chloride)
- CPVC (Chlorinated PVC)
- HDPE (High-Density Polyethylene)
- Glass Reinforced Plastic (GRP)
- Fiber Reinforced Plastic (FRP)
- Ductile Iron
- Titanium

TRADING  
MANPOWER  
CONTRACTING  
HEAVY EQUIPMENT

**شركة تحالف الموارد للمقاولات العامة**  
**RESOURCES ALLIANCE GENERAL CONTRACTING COMPANY**

**CONTACT  
US**

- +966 599 089 124
- +966 - 013 586 2208
- info@realco.com
- www.realco.com
- Building No. 5134, Omar Bin Abdul Aziz Street, King Fahad Road, Al Safat Dist, Al Jubail - 35514



سابك  
sabik

aramco